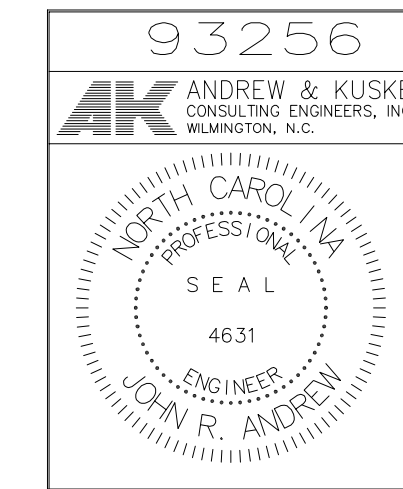


- NOTES:
- "D" = ONE-HALF BEAM DEPTH UP TO 12" MAX. BEAM DEPTH.  
"D" = 6" FOR BEAMS 12" BEAM DEPTH AND GREATER
  - ALL BRACING W.P.'S TO BE COLUMN CENTER LINE UNLESS NOTED
  - CONNECTIONS OF BRACING MEMBERS TO GUSSET PLATES SHALL BE BOLTED WITH 3/4" Ø MIN. H.S. BOLTS (TYPE "X")
  - ALL BRACING CONNECTIONS SHALL DEVELOP LOADS SHOWN ON ELEVATIONS WITH MIN. OF 2 BOLTS PER CONNECTION AND 1/4" MIN. FILLET WELD.
  - GUSSET PLATES SHALL BE 3/8" THICK
  - 20k TENSION ONLY



DRAWING REVISIONS:		
NO.	DATE	REMARKS

DATE:	5/16/94
PROJECT#:	9305
DESIGNED BY:	JRA
DRAWN BY:	JAZ
CHECKED BY:	JRA
CHECKED BY:	